



S E R I E S

PA



ITALIAN PNEUMATIC COMPONENTS FOR INDUSTRIAL AUTOMATION

## Bio - based



The treatment of **PA series** cylinders is produced exclusively using a **renewable raw material** at **100% of vegetal origin**, the Ricinus Communis

Excellent alternative to **STAINLESS STEEL**  
Corrosion resistance in extreme environment

## Fields of application



Oil & gas

Medical

*Chemical-Pharmaceutical*

Maritime

**Offshore**

Naval

Food & beverage



*Fish crops*

**Zootechnical**

Rural activities

Meat processing



Yarn industry

**Automotive**

Textile industry

**Petrochemical**



# Cylinders for aggressive environments to ISO 15552 standard Ø 32 ÷ 100

# series PA

## DESCRIPTION

The "PA" series cylinders comply with ISO 15552 and have a PA11 coating (Rilsan® by Arkema). They provide an advantageous alternative to traditional stainless steel cylinders, generally heavier and more expensive, ensuring excellent corrosion resistance in multiple applications. They are available, from Ø 32 to Ø 100, with rod, nut and screws in stainless steel and techno-polymer piston with magnet, as standard. The barrel, in extruded aluminium alloy "mickey mouse" style and coated in PA11, has TEE-slots on 2 sides where it's possible to mount directly the magnetic sensors series "FM100".



## TECHNICAL DATA

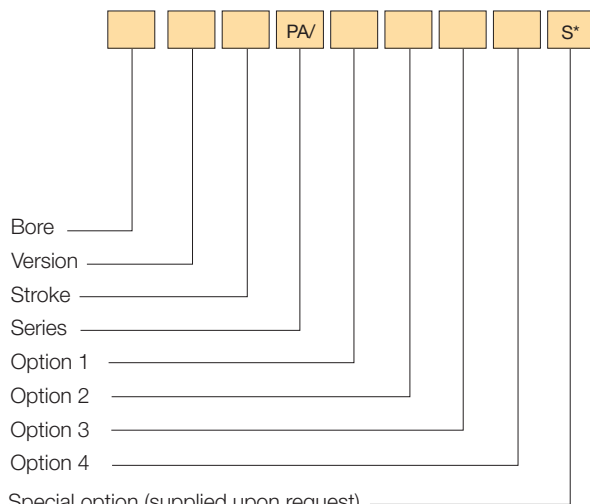
Operating pressure	1 ÷ 10 bar
Working temperature	0 ÷ +80 °C (with dry air -35 °C)
Fluid	Compressed air, filtered, continuous lubricated, unlubricated or dry lubricated
Versions	Double acting, single acting front spring, single acting rear spring, through rod.
Bore	Ø 32, 40, 50, 63, 80, 100
Port size	Ø 32 = G 1/8 Ø 40 - 50 = G 1/4 Ø 63 - 80 = G 3/8 Ø 100 = G 1/2
Standard strokes (mm)*	25, 50, 75, 80, 100, 125, 150, 160, 200, 250, 300, 320, 350, 400, 500, 550, 600, 650, 700, 800, 900, 1000, 1500
Decelerators lenght	Ø 32 40 50 63 80 100 mm 24 29 29 35 35 40
Max, strokes single acting (mm)	Ø 32 ÷ 63 = 50, Ø 80 - 100 = 100

\* Cylinders, with strokes shorter than the decelerators lengths, are NOT cushioned as standard.

## MATERIALS

End caps	Painted die-cast aluminium alloy and PA11 coated
Cylinder barrel	Extrude profile, 20 µm anodized aluminium alloy and PA11 coated
Screws	AISI 303 stainless steel
Piston rod	AISI 303 or AISI 316 stainless steel
Rod nut	Stainless steel
BPiston rod bearing	Bronze-iron 20%, sintered, self-lubricating
Piston	Techno polymer (with magnet) Alluminium alloy (with magnet) for applications without the effective use of the cushioning and for strokes over 1000 mm
Seals	PU, FKM (Viton®)
Cover strips	PVC
Spring	Spring steel

## ORDER KEY



\* See page 1.1 of the General Catalogue.

## VERSION

- / Double acting
- S Single acting front spring
- Y Single acting rear spring
- R Through rod

## OPTION 1

- X "clean" profile barrel

## OPTION 2

- 1 AISI 316 stainless steel rod
- 2 FKM seals
- 3 AISI 316 stainless steel rod and FKM seals

## OPTION 3

- 4 Cover strip for magnetic sensors slots

## OPTION 4

- 5 Alluminium alloy piston

## SPARE PARTS

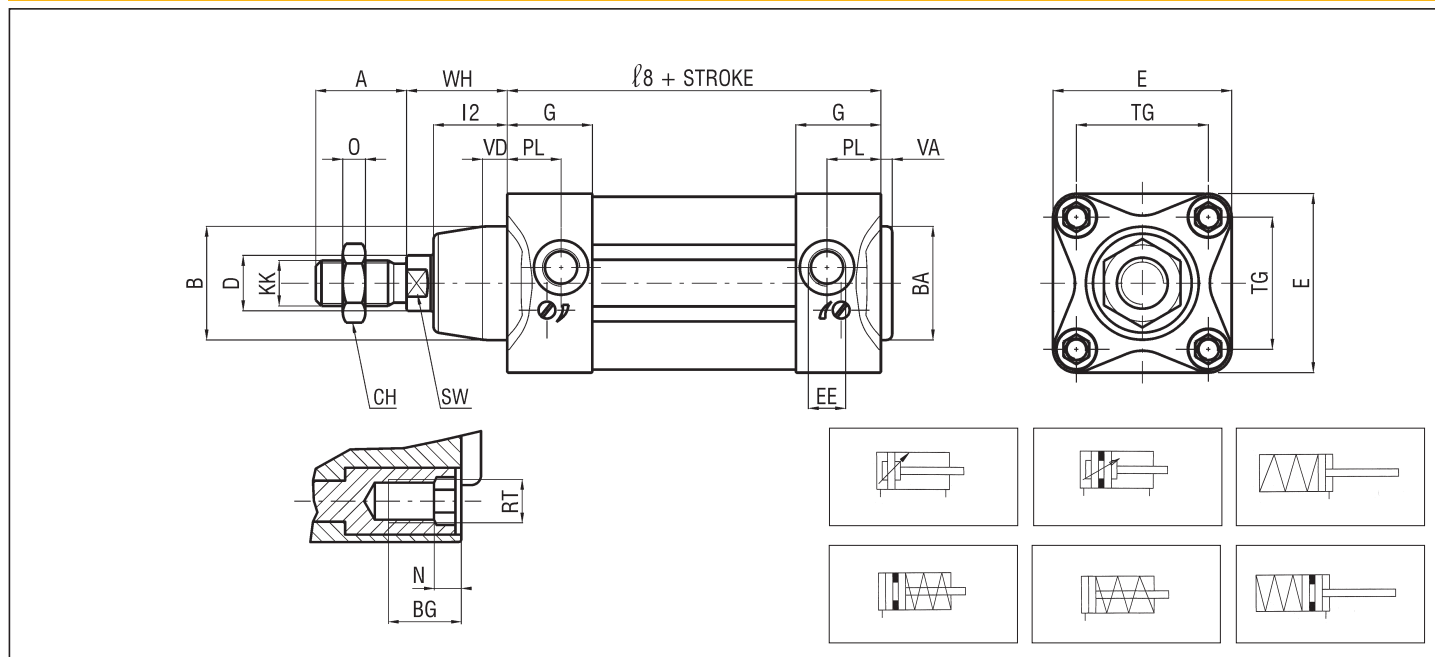
SEALS KIT	
PU	Ø/SG/X
Through rod PU	Ø/SG/R/X
FKM	Ø/SG/X2
Through rod FKM	Ø/SG/R/X2

## ORDER EXAMPLES

Cylinder Ø 50, double acting, 100 mm stroke, "clean" profile barrel:  
**50/100 PA/X**

Cylinder Ø 63, through rod, 150 mm stroke, INOX AISI 316 stainless steel rod with cover strips: **63R150 PA/14**

### PA BASIC CYLINDER



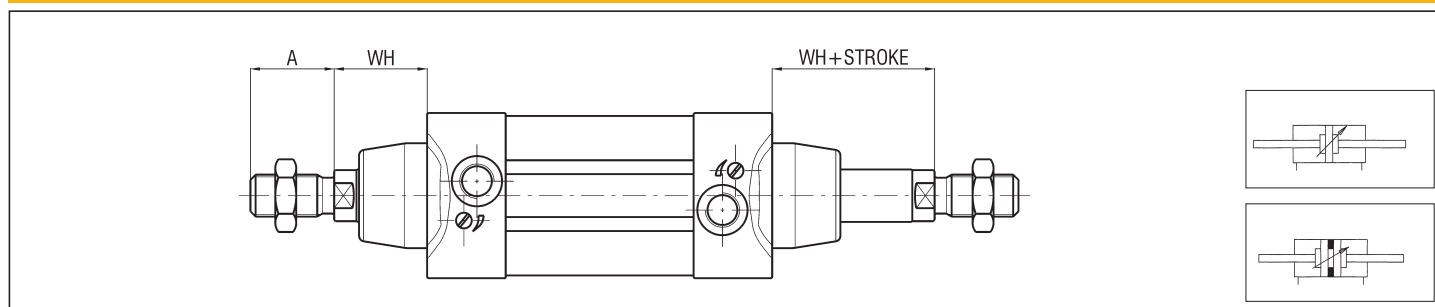
P.S.: Rod nut supplied as standard

### DIMENSIONS AND WEIGHTS BASIC CYLINDER

Ø	A*	BA* B*	BG*	CH	D	E*	EE*	G	KK*	l	l2*	l8*	N	O	PL*	R	RT*	SW*	TG*	VA* VD*	WB	WH*	WEIGHT (g)	INCR. (g) every 10 mm
32	22	30	16	17	12	47	G1/8	27	M10x1,25	175	20	94	5,5	6	18	9	M6	10	32,5	3	86	26	533	23
40	24	35	16	19	16	52	G1/4	31	M12x1,25	201	22	105	5,5	7	20,5	9	M6	13	38	3	100	30	777	32
50	32	40	16	24	20	63	G1/4	30	M16x1,5	191	26	106	5,5	8	19	9	M8	17	46,5	3	127	37	1148	45
63	32	45	16	24	20	75	G3/8	35,5	M16x1,5	217	27	121	6,5	8	22	9	M8	17	56,5	4	127	37	1621	48
80	40	45	16	30	25	93	G3/8	36	M20x1,5	240	29	128	6,5	9	23	9	M10	22	72	4	156	46	2569	67
100	40	55	16	30	25	113	G1/2	39	M20x1,5	258	35	138	6,5	9	24	9	M10	22	89	4	161	51	3550	77

\* STANDARDIZED DIMENSIONS

### THROUGH ROD



P.S.: Rod nuts supplied as standard

### ACCESSORIES

**STAINLESS STEEL** fixings to ISO 15552 standard, use the AX series ones from page 1.52 of the General Catalogue.  
**STAINLESS STEEL** rod accessories: use the F series ones on pag. 1.108 of the General Catalogue.