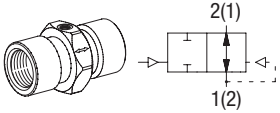


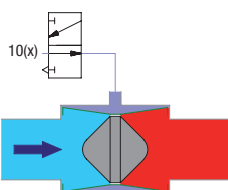
**2/2-Way Valve - Type PGV Series 800 - Pressure Operated by External Medium**

Price group <b>53</b>	Function "B" open in 0-position (without control pressure)	low noise and impact-free closing, for neutral, gaseous and liquid media	<b>Stainless steel 1.4305</b>
-----------------------	--	--	-------------------------------

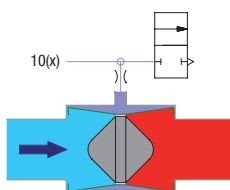
Version	Control pressure [bar]	DN	Kv-value water [m³/h]	G	PN	Sealing material	Type (Valve without solenoid coil)	Order number	Price
 <p>2/2-way valve pressure operated, blocking double-sided by external medium Permitted operating pressure 0.3 to 16 bar</p>	$\geq$ excess operating pressure max. 16	12	2.2	G 1/2	16	NBR	PGV-831-B77-1/2BP	624451	o. r.
		12	2.2	G 1/2	16	EPDM	PGV-831-B77-1/2PP	624452	o. r.
		12	2.2	G 1/2	16	FKM	PGV-831-B77-1/2FP	624453	o. r.

**Illustration**

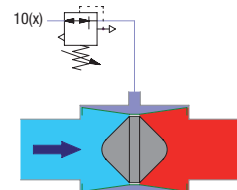
Remotely operated 2/2-way valve regulated by external medium with 3/2-way valve (positive control)



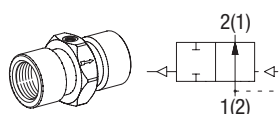
Remotely operated 2/2-way valve regulated by external medium with 2/2-way valve



Remotely operated excess pressure valve regulated by external medium with pressure regulator

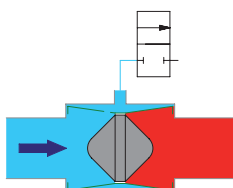

**2/2-Way Valve - Type PGV Series 800 - Pressure Operated by own Medium**

Price group <b>53</b>	Function "B" open in 0-position (without control pressure)	low noise and impact-free closing, for neutral, gaseous and liquid media	<b>Stainless steel 1.4305</b>
-----------------------	--	--	-------------------------------

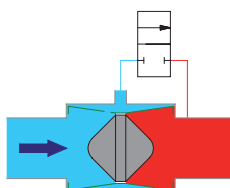
Version	Control pressure [bar]	DN	Kv-value water [m³/h]	G	PN	Sealing material	Type (Valve without solenoid coil)	Order number	Price
 <p>2/2-way valve pressure operated, by own medium Permitted operating pressure 0.3 to 16 bar</p>	$\geq$ excess operating pressure max. 16	12	2.2	G 1/2	16	NBR	PGV-831-B77-1/2BN	624471	o. r.
		12	2.2	G 1/2	16	EPDM	PGV-831-B77-1/2PN	624472	o. r.
		12	2.2	G 1/2	16	FKM	PGV-831-B77-1/2FN	624473	o. r.

**Illustration**

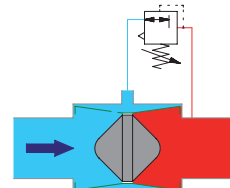
Remotely operated 2/2-way valve regulated by own medium with 2/2-way valve (negative control)



Remotely operated 2/2-way valve regulated by own medium with 2/2-way valve (control medium recycled)



Remotely operated pressure regulator valve regulated by own medium with pressure regulator (control medium recycled)


**Illustration**
