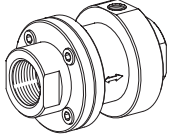
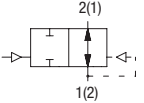
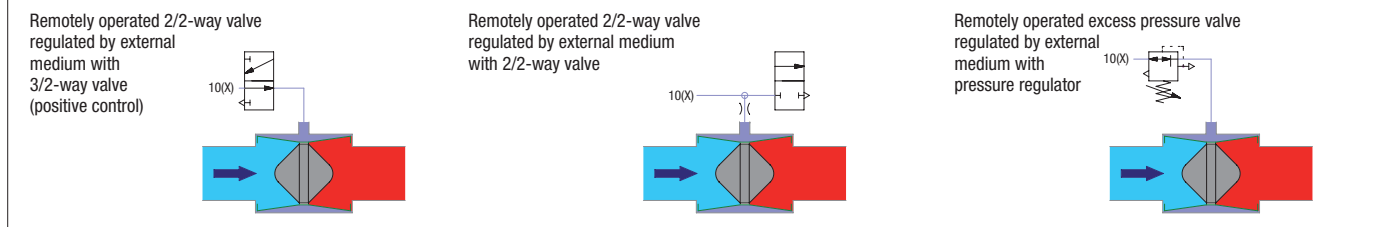


2/2-Way Solenoid Valve - Type PGV Series 700 Pressure Operated by External Medium - Double-Sided Blocking

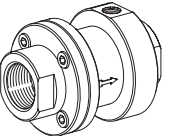
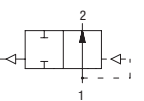
Price group	53	Function "B" - open in 0-position without control pressure	low noise and impact-free closing, for neutral, gaseous and fluids	Stainless steel 1.4305
-------------	-----------	--	--	-------------------------------

Version	Control pressure [bar]	DN	Kv-value water [m ³ /h]	G	PN	Sealing material	Type (Valve without solenoid coil)	Order number	Price
2/2-way valve pressure operated, blocking double-sided by external medium Permitted operating pressure 0.2 to 16 bar  	≥ Excess operating pressure max. 16	15	5.6	G 1/2	16	NBR	PGV-731-B77-1/2BP	624801	o. r.
		15	5.6	G 1/2	16	EPDM	PGV-731-B77-1/2PP	624802	o. r.
		15	5.6	G 1/2	16	FKM	PGV-731-B77-1/2FP	624803	o. r.
		20	7.6	G 3/4	16	NBR	PGV-731-B77-3/4BP	624811	o. r.
		20	7.6	G 3/4	16	EPDM	PGV-731-B77-3/4PP	624812	o. r.
		20	7.6	G 3/4	16	FKM	PGV-731-B77-3/4FP	624813	o. r.
		25	16.8	G 1	16	NBR	PGV-731-B77-1BP	624821	o. r.
		25	16.8	G 1	16	EPDM	PGV-731-B77-1PP	624822	o. r.
		25	16.8	G 1	16	FKM	PGV-731-B77-1FP	624823	o. r.
		32	21	G 1 1/4	16	NBR	PGV-731-B77-5/4BP	624831	o. r.
		32	21	G 1 1/4	16	EPDM	PGV-731-B77-5/4PP	624832	o. r.
		32	21	G 1 1/4	16	FKM	PGV-731-B77-5/4FP	624833	o. r.
		40	29.5	G 1 1/2	16	NBR	PGV-731-B77-6/4BP	624841	o. r.
		40	29.5	G 1 1/2	16	EPDM	PGV-731-B77-6/4PP	624842	o. r.
		40	29.5	G 1 1/2	16	FKM	PGV-731-B77-6/4FP	624843	o. r.
		50	35	G 2	16	NBR	PGV-731-B77-2BP	624851	o. r.
		50	35	G 2	16	EPDM	PGV-731-B77-2PP	624852	o. r.
50	35	G 2	16	FKM	PGV-731-B77-2FP	624853	o. r.		

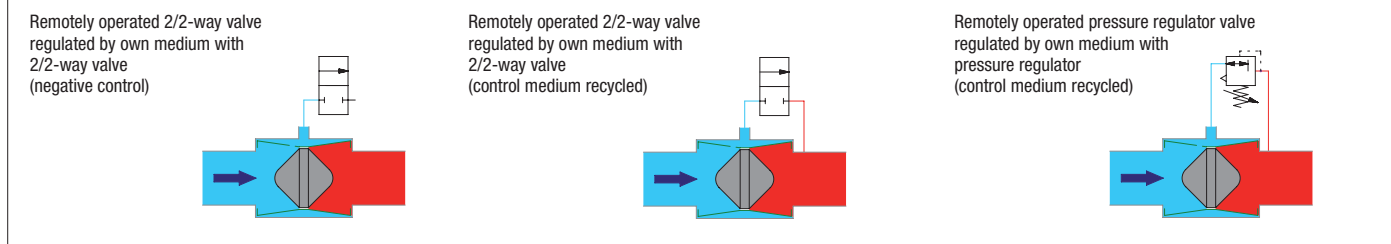
Version and function: 2/2-way solenoid valve type PGV series 700 pressure operated by external medium, double-sided blocking


2/2-Way Solenoid Valve - Type PGV Series 700 Pressure Operated by own Medium

Price group	53	Function "B" - open in 0-position without control pressure	low noise and impact-free closing, for neutral, gaseous and fluids	Stainless steel 1.4305
-------------	-----------	--	--	-------------------------------

Version	Control pressure [bar]	DN	Kv-value water [m ³ /h]	G	PN	Sealing material	Type (Valve without solenoid coil)	Order number	Price
2/2-way valve pressure operated by own medium Permitted operating pressure 0.2 to 16 bar  	≥ Excess operating pressure max. 16	15	5.6	G 1/2	16	NBR	PGV-731-B77-1/2BN	624901	o. r.
		15	5.6	G 1/2	16	EPDM	PGV-731-B77-1/2PN	624902	o. r.
		15	5.6	G 1/2	16	FKM	PGV-731-B77-1/2FN	624903	o. r.
		20	7.6	G 3/4	16	NBR	PGV-731-B77-3/4BN	624911	o. r.
		20	7.6	G 3/4	16	EPDM	PGV-731-B77-3/4PN	624912	o. r.
		20	7.6	G 3/4	16	FKM	PGV-731-B77-3/4FN	624913	o. r.
		25	16.8	G 1	16	NBR	PGV-731-B77-1BN	624921	o. r.
		25	16.8	G 1	16	EPDM	PGV-731-B77-1PN	624922	o. r.
		25	16.8	G 1	16	FKM	PGV-731-B77-1FN	624923	o. r.
		32	21	G 1 1/4	16	NBR	PGV-731-B77-5/4BN	624931	o. r.
		32	21	G 1 1/4	16	EPDM	PGV-731-B77-5/4PN	624932	o. r.
		32	21	G 1 1/4	16	FKM	PGV-731-B77-5/4FN	624933	o. r.
		40	29.5	G 1 1/2	16	NBR	PGV-731-B77-6/4BN	624941	o. r.
		40	29.5	G 1 1/2	16	EPDM	PGV-731-B77-6/4PN	624942	o. r.
		40	29.5	G 1 1/2	16	FKM	PGV-731-B77-6/4FN	624943	o. r.
		50	35	G 2	16	NBR	PGV-731-B77-2BN	624951	o. r.
		50	35	G 2	16	EPDM	PGV-731-B77-2PN	624952	o. r.
50	35	G 2	16	FKM	PGV-731-B77-2FN	624953	o. r.		

Version and function: 2/2-way solenoid valve type PGV series 700 pressure operated by own medium



Function - Illustrations Versions

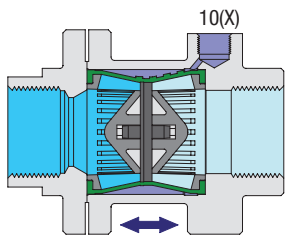
Price group **53**

Function "B" - open in 0-position without control pressure

low noise and impact-free closing, for neutral, gaseous and fluids

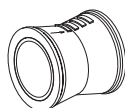
Stainless steel 1.4305

Function



Shown: Type PGV in external medium version shown, control pressure present.

Options

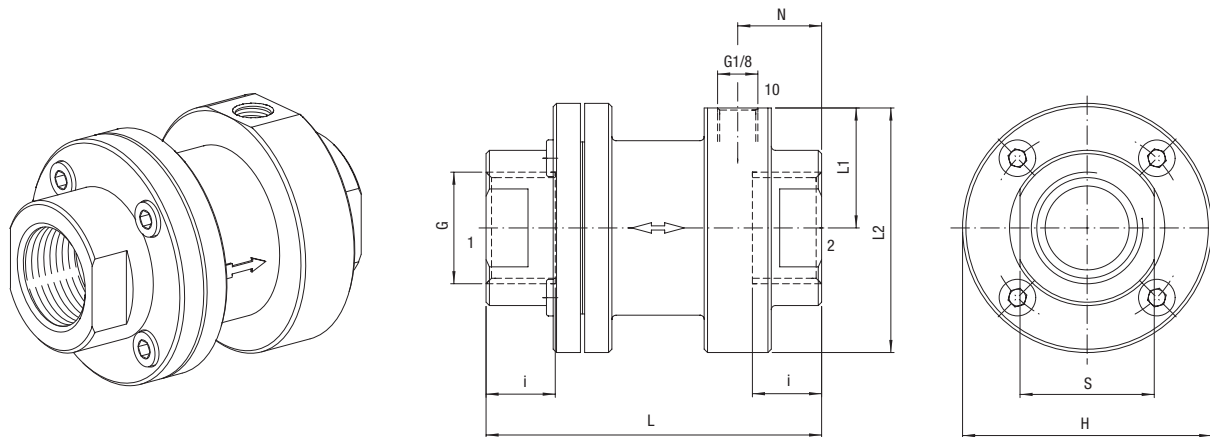


Membrane made of other material: CR (chloroprene) optimal for compressed air HNBR (NBR with higher nitrile content) specially for certain synthetic oils



0-pressure membrane requires no differential pressure to open, however to close requires control pressure 1 bar above operating pressure Type EGV-731-B77-/.0-..

Illustration



Dimensions

DN	G	L	l	N	L1	L2	H	S
15	G 1/2	68	13	14	28.5	58.5	60	27
20	G 3/4	80	15	20	28.5	58.5	60	32
25	G 1	94	17	47	41.5	85.5	88	41
32	G 1 1/4	112	19	56	41.5	85.5	88	50
40	G 1 1/2	132	21	53.5	55	112	114	55
50	G 2	160	24.5	67.5	55	112	114	70