
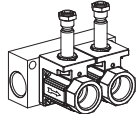
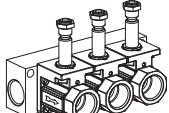


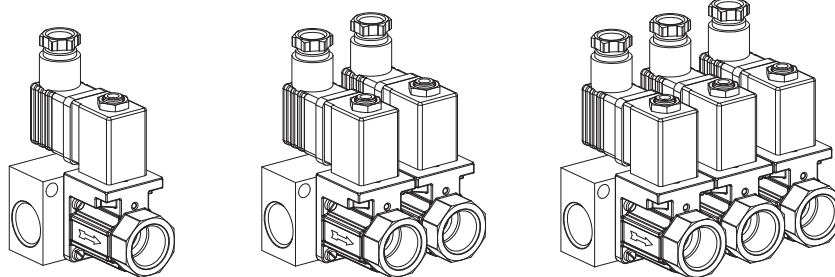
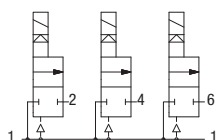
2/2-Way Solenoid Valve Battery - Type EGV Series 300

Price group	53	Function "A" normally closed, distributor version	low noise and impact-free closing, for neutral, gaseous or fluids
-------------	-----------	---	---

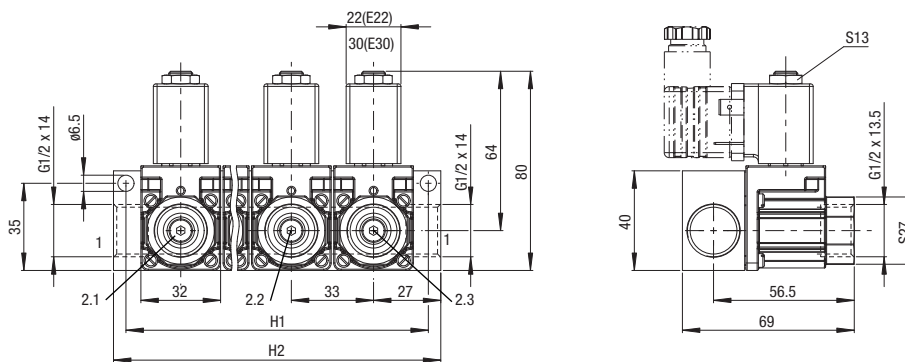
Brass

Version		DN	Kv-value water [m ³ /h]	G	PN	Possible type of power	Sealing material	Type	Order number	Price
	Valve without solenoid coil Permitted operating pressure 0.3 bar up to value according to table below.	13	3.2	G 1/2	16/8	AC/DC	NBR	EGV-311/V1-AH9-1/2BN-00	616801	o. r.
		13	3.2	G 1/2	16/8	AC/DC	EPDM	EGV-311/V1-AH9-1/2PN-00	616831	o. r.
		13	3.2	G 1/2	16/8	AC/DC	FKM	EGV-311/V1-AH9-1/2FN-00	616861	o. r.
	Valve, 2-fold Battery or solenoid coil Permitted operating pressure 0.3 bar up to value according to table below.	13	3.2	G 1/2	16/8	AC/DC	NBR	EGV-311/V2-AH9-1/2BN-00	616802	o. r.
		13	3.2	G 1/2	16/8	AC/DC	EPDM	EGV-311/V2-AH9-1/2PN-00	616832	o. r.
		13	3.2	G 1/2	16/8	AC/DC	FKM	EGV-311/V2-AH9-1/2FN-00	616862	o. r.
	Valve, 3-fold Battery or solenoid coil Permitted operating pressure 0.3 bar up to value according to table below.	13	3.2	G 1/2	16/8	AC/DC	NBR	EGV-311/V3-AH9-1/2BN-00	616803	o. r.
		13	3.2	G 1/2	16/8	AC/DC	EPDM	EGV-311/V3-AH9-1/2PN-00	616833	o. r.
		13	3.2	G 1/2	16/8	AC/DC	FKM	EGV-311/V3-AH9-1/2FN-00	616863	o. r.

Illustration



Valve Version		
Description	H1	H2
Single valve	44	54
2-fold battery	77	87
3-fold battery	110	120
4-fold battery	143	153
5-fold battery	176	186
6-fold battery	209	219
7-fold battery	242	252
8-fold battery	275	285
9-fold battery	308	318
10-fold battery	341	351








Valve batteries series 300 can also be delivered at short notice in 4- to 10-fold version

Solenoid valves, with pressure regulator, pressure operated valves or pressure regulator valves, can thus be flange-mounted on a collector plate according to requirement, or also opposite laterally reversed. Likewise the flow direction of the flange valves can be freely selected to a large extent. (Distributor or mixer version)

AVS Römer furthermore manufactures so-called multi-functional blocks, with integrated injectors, pressure sensors and such like.

Valve batteries series 100 can also be constructed combined, with all valve Types, for all listed functions and with various options according to customer requirements.

Permitted Operating Pressure OP

DN	Type	PN	Combinable solenoid coil			Permitted Operating Pressure OP [bar] at ambient temperature + 60 °C															
			Type	Nominal power P ₂₀			AC 50 Hz 			AC 60 Hz 			DC 			DC 			DC 		
				AC 50 Hz [VA]	AC 60 Hz [VA]	DC [W]	90 %U _N Medium temperature	90 %U _N Medium temperature	90 %U _N Medium temperature	90 %U _N Medium temperature	90 %U _N Medium temperature	90 %U _N Medium temperature	90 %U _N Medium temperature	90 %U _N Medium temperature	90 %U _N Medium temperature	90 %U _N Medium temperature	90 %U _N Medium temperature	90 %U _N Medium temperature	90 %U _N Medium temperature		
				60 °C	90 °C	130 °C	60 °C	90 °C	130 °C	60 °C	90 °C	130 °C	60 °C	90 °C	130 °C	60 °C	90 °C	130 °C	60 °C	90 °C	130 °C
13	EGV-311/V-A.	16/8	E22...L. 3.5 E22...M. 5.5 E22...H. - E30...P. 12	on req. 5 - 10.5	2.5 5 8 8	on req. 16 - 16	on req. 16 - 16	on req. 16 - 16	on req. 16 - 16	on req. 16 - 16	on req. 16 - 16	6 16 16	5 16 16	4 14 16	4 12 16	3 10 16	2 8 16	6 15 16	5 13 16	4 12 16	

