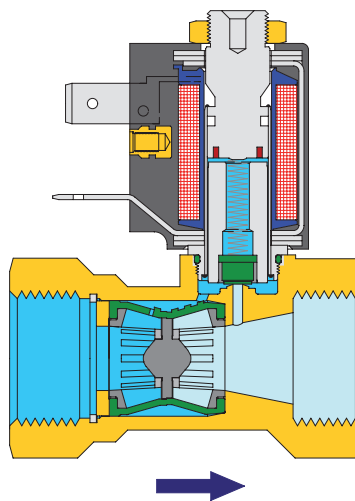
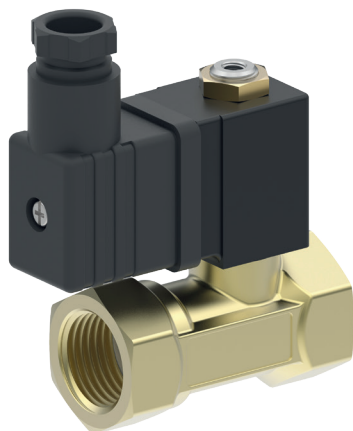


GAMMA Valves Serie 200


Especially economical valve series DN 10 (G 3/8) and DN 12 (G 1/2) for the most varied of applications in mechanical and apparatus construction.

The minimal space requirement of this socket valve series is especially of advantage in small apparatus construction (representations G1/2 in scale 1:1)

Dirt particles in the medium can lead to malfunction in the solenoid valves. The installation of a strainer is thus to be recommended, e.g. type SMF-133..

CHARACTERISTICS
GENERAL

Constructional design	Low noise membrane valve with coaxial flow			
Product name	2/2-way Solenoid valve servo controlled	2/2-way Solenoid valve servo controlled	2/2-way Solenoid valve pressure operated	2/2-way valve, pressure operated by external or own medium
Product type	EGV	EGV	EGV	PGV
Function	"A" normally closed	"B" normally open	"Z" normally closed	"B" normally open
Nominal diameter	DN 10 and DN 12			
Port size	Thread (ISO 228) G 3/8 and G 1/2			
Ambient temperature	-20 °C to +60 °C (others on request)			
Medium temperature	for NBR: -10 °C to +90 °C for FKM and EPDM: -10 °C to +130 °C (for exceptions see table)			
Medium viscosity	up to ca. 20 mm ² /s			
Valve body material	Brass			
Membrane support unit material	reinforced synthetic material (others on request)			
Other internal component	Stainless steel and non-ferrous metal			
Material	NBR (nitrile rubber), EPDM (ethylene propylene) or FKM (fluoride rubber) (others on request)			
Mounting method	Installation in rigid pipe system			
Mounting position	optional, preferably upright			
PNEUMATIC - HYDRAULIC				
Nominal pressure (bar)	according to type table. The numerical value of the nominal pressure PN signifies the Permitted Operating Pressure OP in bar at 60°C ambient temperature and 60°C medium temperature. Insofar as two values are given, the first value refers to solenoid coil with highest electrical current consumption, the second value to that with lowest current consumption.			
Pressure range	0.3 bar up to permitted operating pressure OP according to table.			
Rate	Kv-value according to type table (full passage with pressure difference of 0.5 bar or higher)			
Medium	gaseous or fluids Sealing material NBR: e.g. compressed air, water, hydraulic fluids, neutral gases Sealing material EPDM: e.g. hot water Sealing material FKM: e.g. solvents, hot water, hot air above 90 °C			
Response time	Opening time: 20 ms to 1 s; closing time: 25 ms to 3 s, according to medium			
Electric	see solenoid coils			