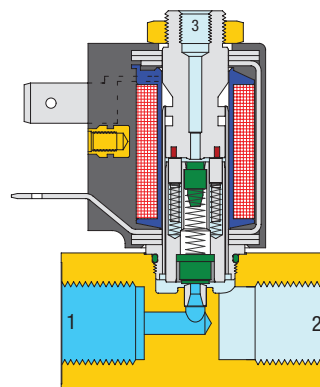
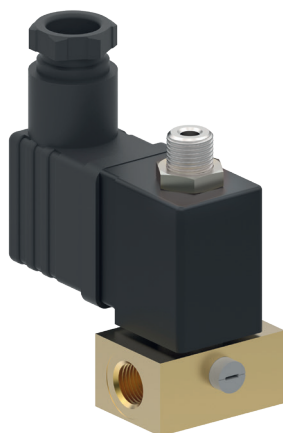


DIGMA Solenoid Valves Type EAV Series 200


Solenoid valve series with familiar constructional design, however with significantly improved magnetic circuit.

On the lower part of the guide tube a magnetic nipple is welded on, which reduces the magnetic resistance of the circuit.

This improvement enables among other things the use of solenoid valves with significantly reduced power consumption and thus lowers the self-heating of the system.

A further feature of this series is the especially strong and corrosion-resistant construction. Solenoid coils with four graduated performance classes enable convenient adjustment to various requirements, with respect to nominal width, diameters, operating pressure, power consumption, Type of current or permitted self-heating.

CHARACTERISTICS
GENERAL

Constructional design	Seat valve, rubber seals			
Product name	2/2-way solenoid valve		3/2-way solenoid valve	
Actuation	electric, direct-acting, resting manual override optional			
Product type	EAV-2..-A..	EAV-2..-B..	EAV-2..-C..	EAV-2..-D..
Function	"A" normally closed (closing with flow)	"B" normally open (closing against current)	"C" normally closed with "1", "2" to "3" discharged (closing against current)	"D" in 0 position "1" to "2" open, "3" closed (closing against current)
Nominal diameter	DN 1.2 to DN 2.2		DN 1.2 to DN 1.8	
Connection	M 5 or pipe thread (ISO 228) G 1/8 to G 1/4			
Ambient temperature	-20 °C to +60 °C (others on request)			
Medium temperature	with NBR: -10 °C to +90 °C for FKM: -10 °C to +130 °C (for exceptions see table)			
Medium viscosity	up to approx. 20 mm ² /s			
Valve body material	Brass			
Manual override	PPE (Polyphenylene ether)			
Seat nozzle material	Stainless steel			
Other inner component material	Stainless steel and non-ferrous metal. DC non-ferrous metal-free version			
Seal material	NBR (Nitrile rubber) or FKM (Fluoride rubber) (others on request)			
Mounting method	2 M3 tapped holes in valve body or using rigid pipework			
Mounting position	optional, preferably upright			
PNEUMATIC - HYDRAULIC				
Nominal pressure	According to Type table. The numerical value of the nominal pressure PN signifies the permitted excess operating pressure OP in bar at 60 °C ambient temperature and 60 °C medium temperature. Insofar as two values are given, the first value refers to solenoid coils with highest electrical power consumption, the second value to that with lowest power consumption.			
Pressure range	Technical vacuum up to permitted operating pressure OP. For exceptions which refer to minimum permitted operating pressure see table.			
Flow rate	Kv-value and QNn-value according to Type table			
Medium	gaseous or liquid Sealing material NBR: e.g. compressed air, water, hydraulic fluids, neutral gases Sealing material FKM: e.g. solvents, hot water, hot air			
Response time	opening time: 7 - 20 ms closing time: 12 - 20 ms			
Electrical	see solenoid coils			