

# SERIES 350 Modular Integral Filter/Regulators

# CFR350 Models Port Sizes: 1/4, 3/8, 1/2



Model Shown: CF5AR350-3G

## SPECIFICATIONS

### Ambient/Media Temperature:

Plastic Bowl, all drain types: 40° to 125°F (4° to 52°C).  
Metal Bowl, manual drains: 40° to 175°F (4° to 79°C).  
Metal Bowl, float drains: 40° to 150°F (4° to 66°C).

**Body:** Zinc.

**Dome:** Nylon

**Bowl:** 5.1-Ounce (151-ml) polycarbonate plastic with nylon shatterguard; optional 6.0-Ounce (177-ml) aluminum bowl with clear nylon sight glass.

**Bowl Drain:** Internal float drain; by removing the adjustment knob, a 3/16" (5mm) flexible tube can be connected to drain effluents. Optional manual drain.

**Filter Element:** 5-µm-rated polyethylene; optional 5-µm-rated and 40-µm-rated bronze element.

**Fluid Media:** Compressed air. Inlet Pressure:

Plastic bowl & manual drain: 0-150 psig (0-10 bar).

Plastic bowl & Float drain: 30-150 psig (2-10 bar).

Metal bowl & manual drain: 0-250 psig (0-17 bar).

Metal bowl & Float drain: 30-200 psig (2-14 bar).

**Outlet Pressure:** Adjustable up to 150 psig (10 bar); optional adjusting springs.

**Optional Pressure Adjustment Locking Key:** Removable.

**Pressure Gauge:** 0 to 200 psig (14 bar); 1/4 NPT gauge ports front and rear.

**Panel Mounting:** 2-1/16-inch (52-mm) hole required.

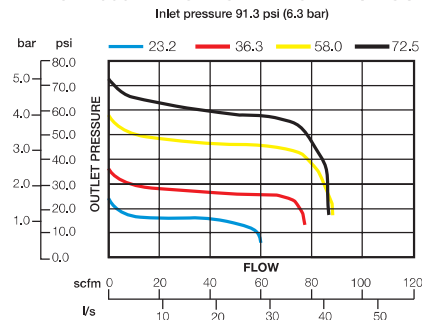
**Seals:** Nitrile.

**Valve:** Brass.

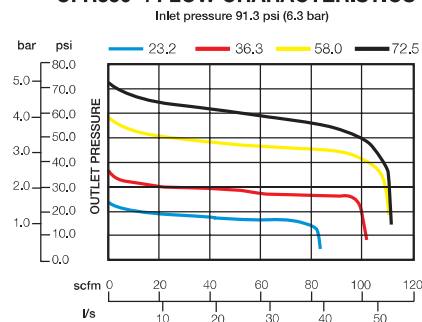
- ◆ Modular or inline mounting.
- ◆ Designed to remove particulate material down to 5 micron from the airstream to protect downstream equipment.
- ◆ Optional bronze 5-µm-rated, 20-µm-rated, and 40-µm-rated. 5-µm-rated polyethylene filter elements are standard.
- ◆ Superior water removal up to 98% efficiency - free water.
- ◆ Removal of effluents via manual or automatic float drains.
- ◆ Inlet pressure rated at 250 psig (17 bar) with metal bowls up to 175° F. (79° C.).
- ◆ Superior pressure regulation - diaphragm type regulator
- ◆ Self relieving design; large diaphragm sensing ratio; non-relieving optional.
- ◆ Optional pressure adjustment locking key; tamper resistant pressure setting.
- ◆ Reverse flow option.
- ◆ Pressure gauge.
- ◆ Front mounted modular clamping design with encapsulated screws.
- ◆ Compatible with modular 380 series of products.
- ◆ NPTF port threads; optional BSPP threads.

## FLOW CHARTS

### CFR350-2 FLOW CHARACTERISTICS



### CFR350-4 FLOW CHARACTERISTICS



## DIMENSIONS inches (mm)

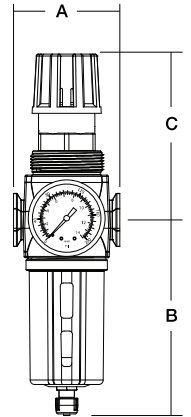
Bowl	A	B †	C	Depth	Weight lb (kg)
Std plastic	3.0 (76.2)	5.54 (140.6)	4.68 (119)	2.51 (63.8)	1.98 (0.90)
Std metal	3.0 (76.2)	6.37 (161.8)	4.68 (119)	2.76 (70.1)	2.17 (0.99)

**Panel Mounting:** 2-1/16" (52mm) hole required.

† **Bowl (standard) removal clearance:** add 3.1 (79)

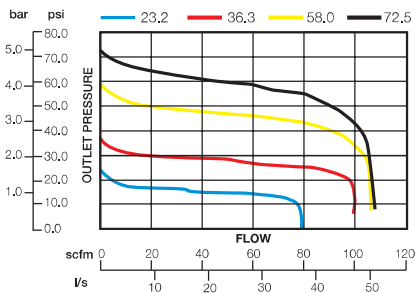
† **Bowl (extended) removal clearance:** add 6.1 (155)

Dimensions above reflect less gauge.



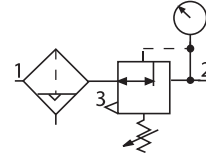
### CFR350-3 FLOW CHARACTERISTICS

Inlet pressure 91.3 psi (6.3 bar)



### ISO Filter/Regulator Symbol

**Automatic Drain  
Self-relieving**



### REPLACEMENT FILTER ELEMENT KITS

Element Rating	Kit Number
5-µm Polyethylene (Std element)	A60F-03PE5
40-µm Bronze	A60F-03E3
5-µm Bronze	A60F-03E5
20-µm Bronze	A60F-03E4

## ORDERING INFORMATION

Change the letters in the sample model number below to specify the filter/regulator you want.

# BCFR 350 - 3 E5 G W

#### BOWL AND DRAIN TYPE

- Plastic bowl, manual drain ..... CFR
- Plastic bowl, internal float drain (plastic stem) ..... CF5AR
- Metal bowl, manual drain ..... BCFR
- Metal bowl, internal float drain (metal stem)..... BCF6AR

#### PORT SIZE

- 1/4 NPTF ..... 2
- 3/8 NPTF ..... 3
- 1/2 NPTF ..... 4

#### PORT TYPE

- NPTF threads ..... Leave blank
- BSPF threads ..... W

#### OPTIONS

- None ..... Leave Blank
- Pressure gauge ..... G
- Mounting nut ..... P

**OPTIONS** (more than one can be chosen.  
Add in alphabetical order).

- None ..... Leave blank
- Relieving ..... Leave blank
- Non-relieving ..... A
- Locking knob ..... B
- Reverse flow ..... QE

#### Filter Elements

- 5-µm-rated (polyethylene) ..... Leave blank
- 5-µm-rated (bronze) ..... E5
- 20-µm-rated (bronze) ..... E4
- 40-µm-rated (bronze) ..... E3

#### SPRINGS:

- 0-200 psig (0-13 bar) ..... H
- 0-150 psig (0-10 bar) std .... Leave blank
- 0-100 psig (0-6 bar) ..... L100
- 0-50 psig (0-3 bar) ..... L
- Limit maximum psig setting ..... M\*
- Tee Handle ..... T

\* insert maximum limited pressure.

### MOUNTING BRACKETS

See page 346.